

ENTERPRISES SOLUTIONS



ONSHORE AND OFFSHORE

Who we are

Company

Organization chart

Collaborators and Team

Strategic vision

Segments

Services & Products

Projects & Patent

Mission, vision, values

Partners and Customers

Acknowledgment

Customers Contact us

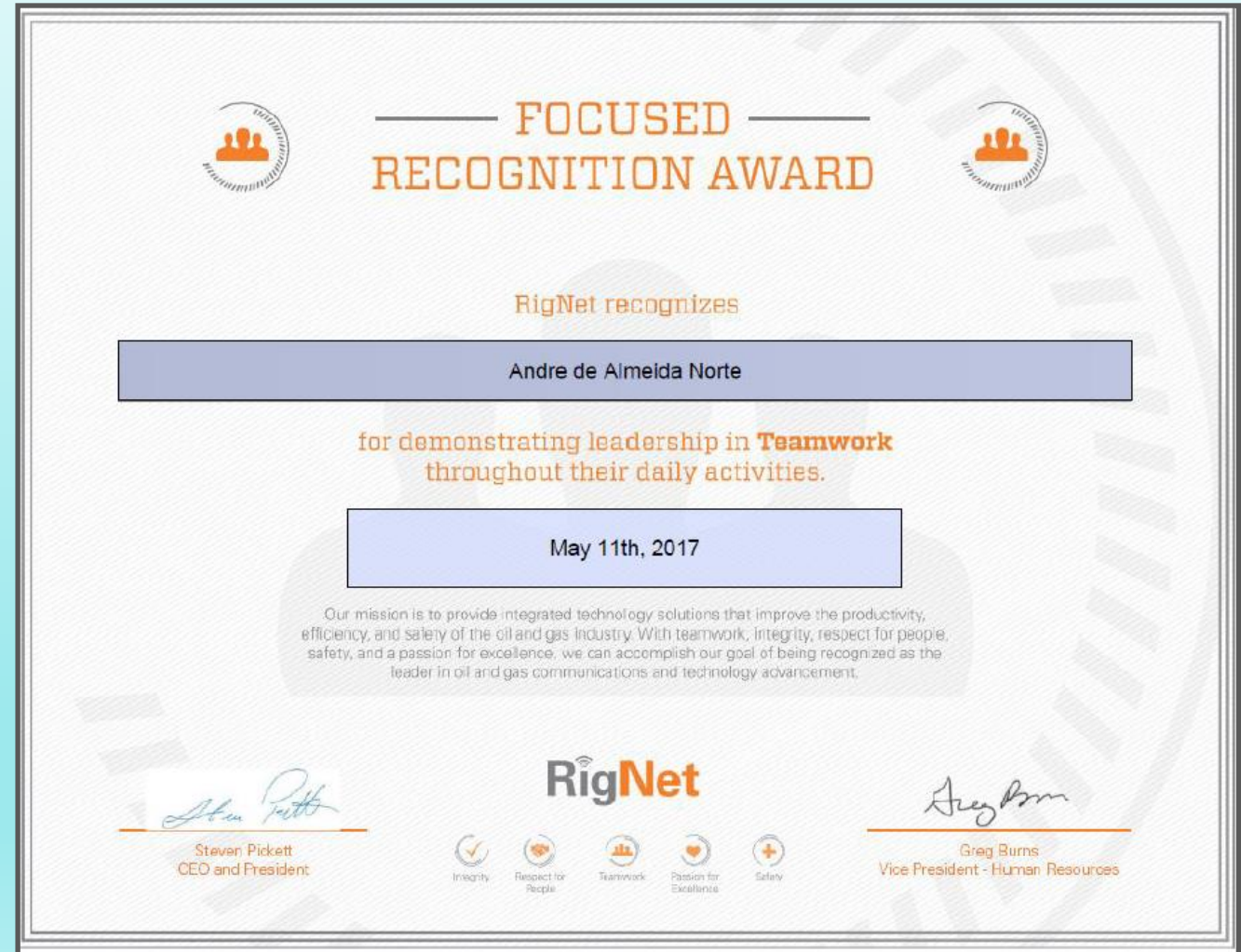


Who we are





GRAN NC TECH SOLUTIONS, is a company that provider's multi technological solutions for the Oil and Gas Industry. We are mainly recognized for our knowledge and expertise in the sectors that we operated over the past few years, as we can find below in one of our examples.

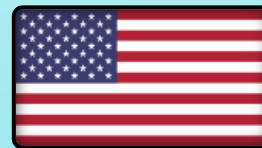




We started our company in Miami in 2008 as a provider of nautical equipment for small boats. Due to the growth in demand and requests, in 2011 we decided to increase the portfolio and become a multi-solutions provider for the oil and gas industry. Strategically in 2014, we made the final move to Texas, where most of the offshore companies are located, which brought us closer to customers.



Rua: Teixeira de Gouvêa, 1006 – Centro, Macaé – Rio de Janeiro – 27910-110



12307 Morett Court Richmond – Houston Texas 77406

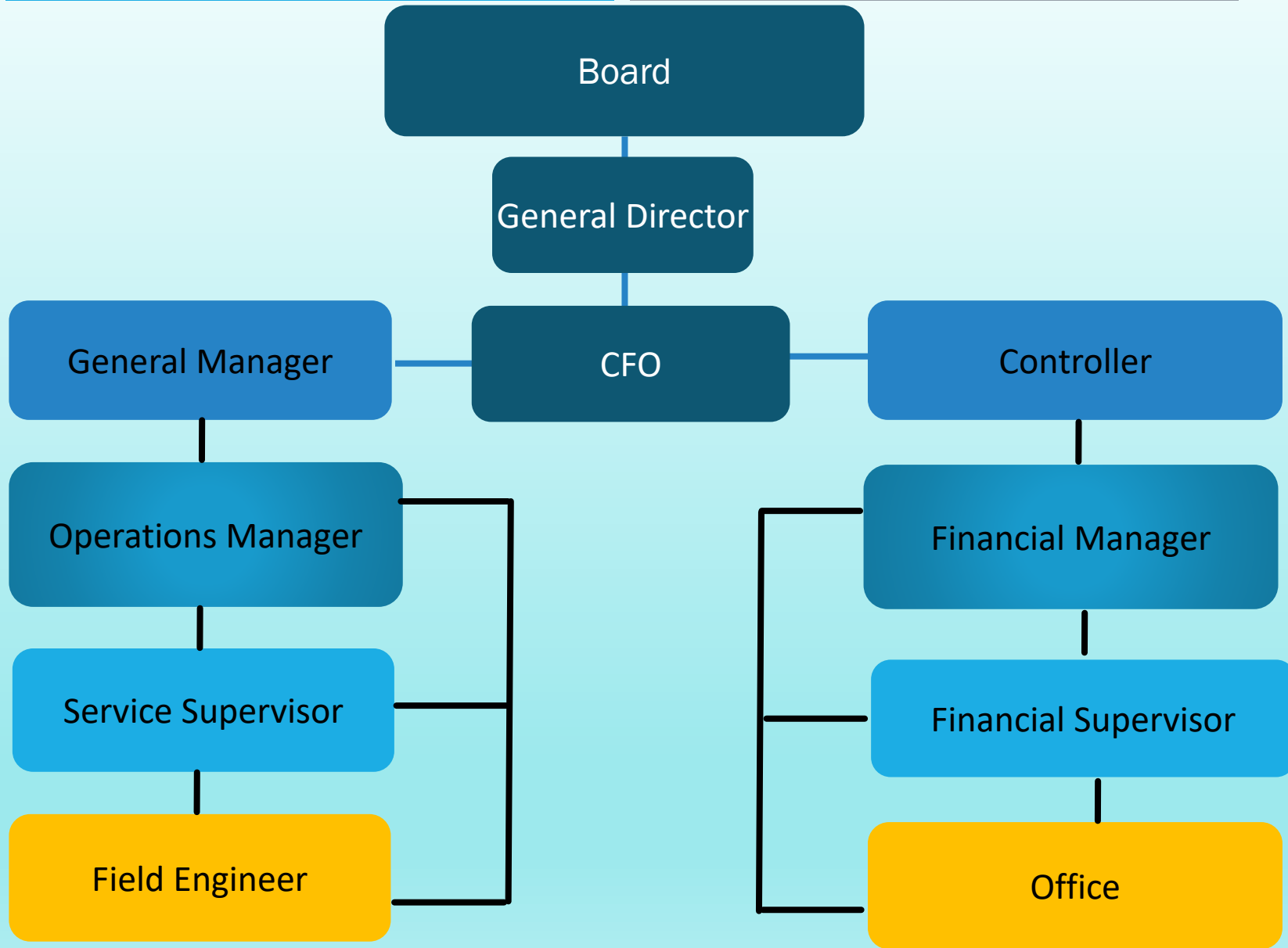
COMPANY





**NC
Tech
Solutions**

ORGANIZATION CHART



ORGANOGRAMA

PROFESSIONAL TEAM



**NC
Tech
Solutions**



Our professionals are accredited by the regulatory institutions, and are constantly trained and tested to obtain the required certifications for each specific job, to meeting with all the requirements imposed in our areas of expertise



SPECIFICS CERTIFICATIONS

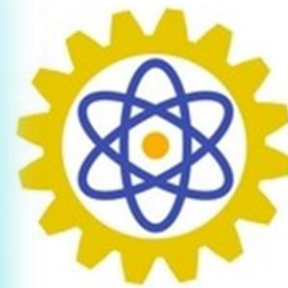


Field Engineers

The Team have all credentials required, to embark on offshore units.

**CBSP – BOSIET – HUET – THUET – NR6 NR10 – NR20 - NR33 – NR34
NR35 – EXPLOSIVE ATMOSPHERE**

CERTIFIED PPE



**NC
Tech
Solutions**

APPROVED CA - PPE



OFFSHORE UNITS

Safety Overalls

NC TECH SOLUTIONS

TECIDO: * SATURNO FR / LARANJA 2063

* CA: 40.819
ATPV 9,5 CAL/CM² + RISCO 2

PRODUTO: MACACÃO

MODELO: PADRÃO RF

DESCRIÇÃO:

- * GOLA PADRE COM VELCRO;
- * 2 BOLSOS (SUPERIORES) COM TAMPAS E VELCRO;
- * VELCRO DE PERSONALIZAÇÃO ACIMA BOLSO ESQ.;
- * TRASEIRO: DOIS BOLSOS FECHADOS POR VELCRO EMBUTIDO NA COR DO TECIDO;
- * MANGA: LONGA COM PUNHO E CARCELA, VELCRO NA COR DO TECIDO DA CARCELA ATÉ O PUNHO;
- * BOLSO PORTA CANETA MANGA ESQ.;
- * FAIXA REFLETIVA 2,5CM (OMBRO, MANGAS E PERNAS - NA ALTURA DO JOELHO);
- * ZÍPER DE NYLON
- * BOLSOS CARGO NAS PERNAS

SILK/BORDADO:

- * PATCH BORDADO BOLSO PEITO ESQUERDO E COSTAS

ETIQUETA: BANDEIRA DO BRASIL MANGA ESQUERDA

PATCH: RF ACIMA DO BOLSO PEITO DIREITO 3,5 X 3,5CM

OBSERVAÇÃO:



Profissionais vestindo Profissionais



APPROVED CA - PPE



OFFSHORE UNITS

SAFETY BOOTS



50B29 CPAP SRV COMPOSITE

8080012927

Bota de segurança confeccionada em couro, ideal para construção civil, elétrica, estaleiros, madeiras, mecânicas, mineração, montadoras, prestadoras de serviços e siderurgia. Sem componentes metálicos (atende à NR 10), ela oferece proteção elétrica e mecânica. Este calçado tem colarinho e lingueta soft acolchoados, com forração Air Comfort, transpirável, fechamento em cadarço e palmilha de montagem resistente à perfuração, que cobre 100% da planta dos pés. A bota apresenta solado isolante em PU bidensidade, injetado diretamente no cabedal, e biqueira de composite leve e ultrarresistente.

CA. 42374



CONSULTA
C.A

COMPRE
ONLINE

ONDE
ENCONTRAR

SEJA UM
REVENDEDOR

FICHA
TÉCNICA

APPROVED CA - PPE



OFFSHORE UNITS

SAFETY HELMET – CA 365



APPROVED CA - PPE



OFFSHORE UNITS

SAFETY GLASSES CA - 6942



APPROVED CA - PPE



OFFSHORE UNITS

NOISE DAMPER CA - 27971



APPROVED CA - PPE



OFFSHORE UNITS

IMPACT GLOVES CA - 31901

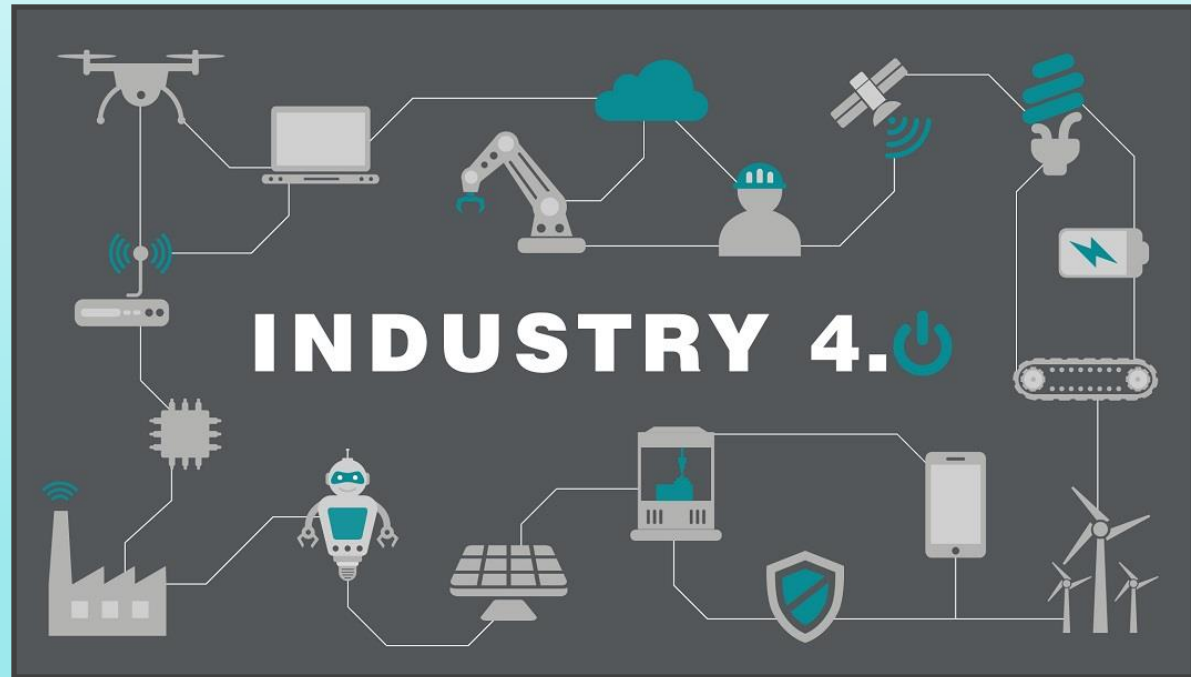


STRATEGIC VISION





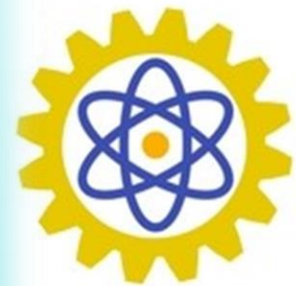
After a study of trends in global business opportunities, we decided to invest in multi-solution modality in Brazil, providing the same range of services developed in other countries, with good prices, quality and commitment that has been our target since the creation of the company.



Strategic Vision

SEGMENTS

Automation;
Cabling;
Electric;
Electronic;
Instrumentation;
Satellite Systems;
CFTV;
CCTV;
Radio Systems;
Data transmission;
Telemetry
GMDSS systems;



**NC
Tech
Solutions**

Services



SATELLITE SYSTEMS

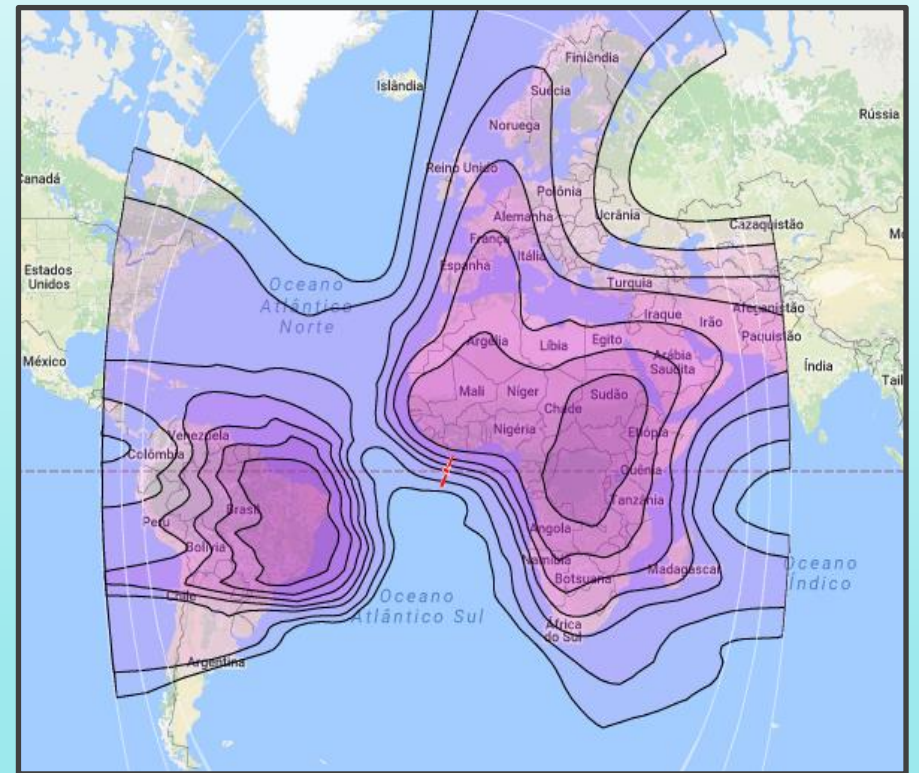


SATELLITE COVERAGE

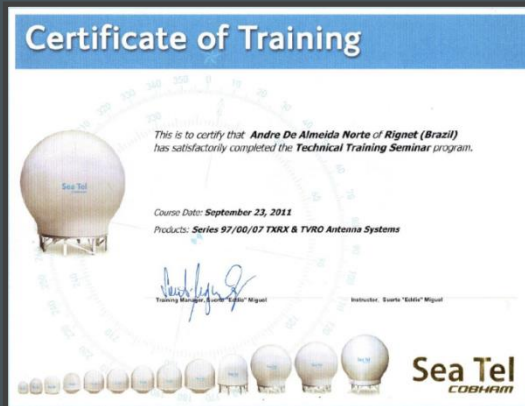
SOUTH AMERICA



AROUND THE WORLD



STABILIZED SATELLITE SYSTEM



INTERNATIONAL QUALIFICATION

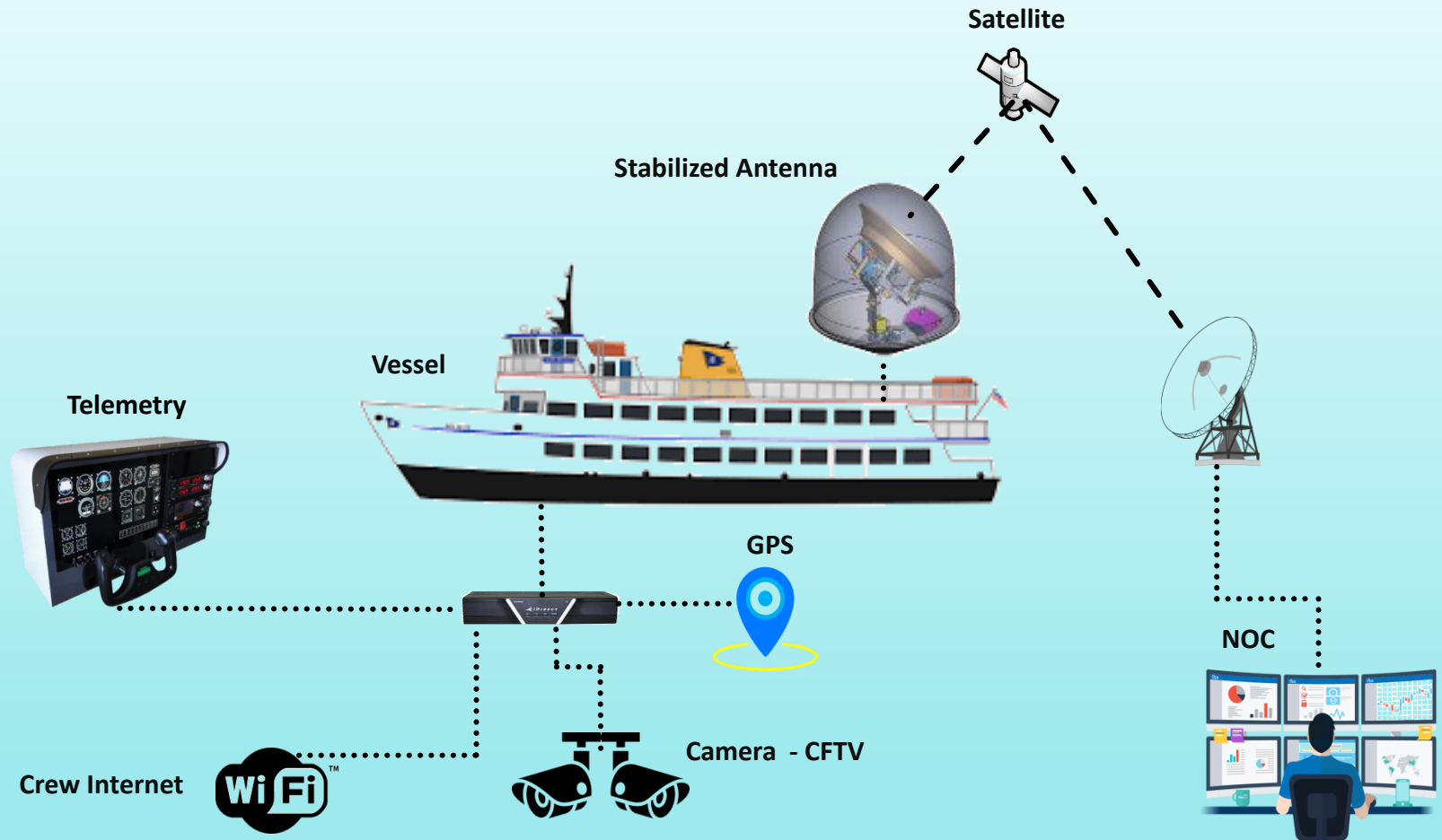
NCTECH has its own team, with international certificates in VSAT systems and automated satellite antennas. (Seatel, Intellian, Orbit, KVH) are some of them.



LOCAL AND REMOTE ACCESS

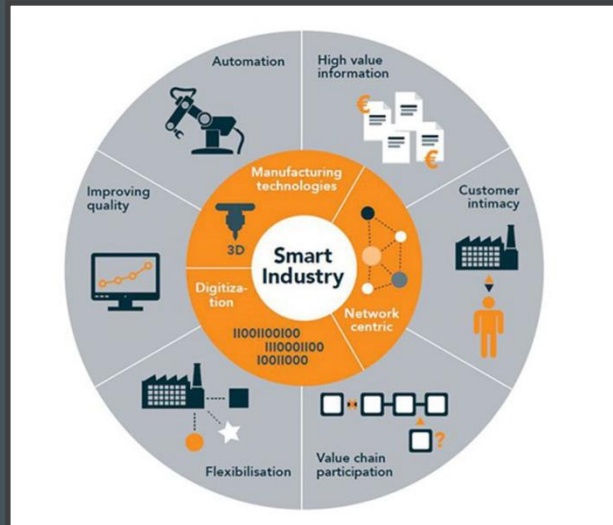
With our technology, we can via satellite and radio communications setup provide internet, remote monitoring of cameras and sensors, telemetry, telephony and internet on boats, rigs and jackups around the globe.

Voice and Data Services



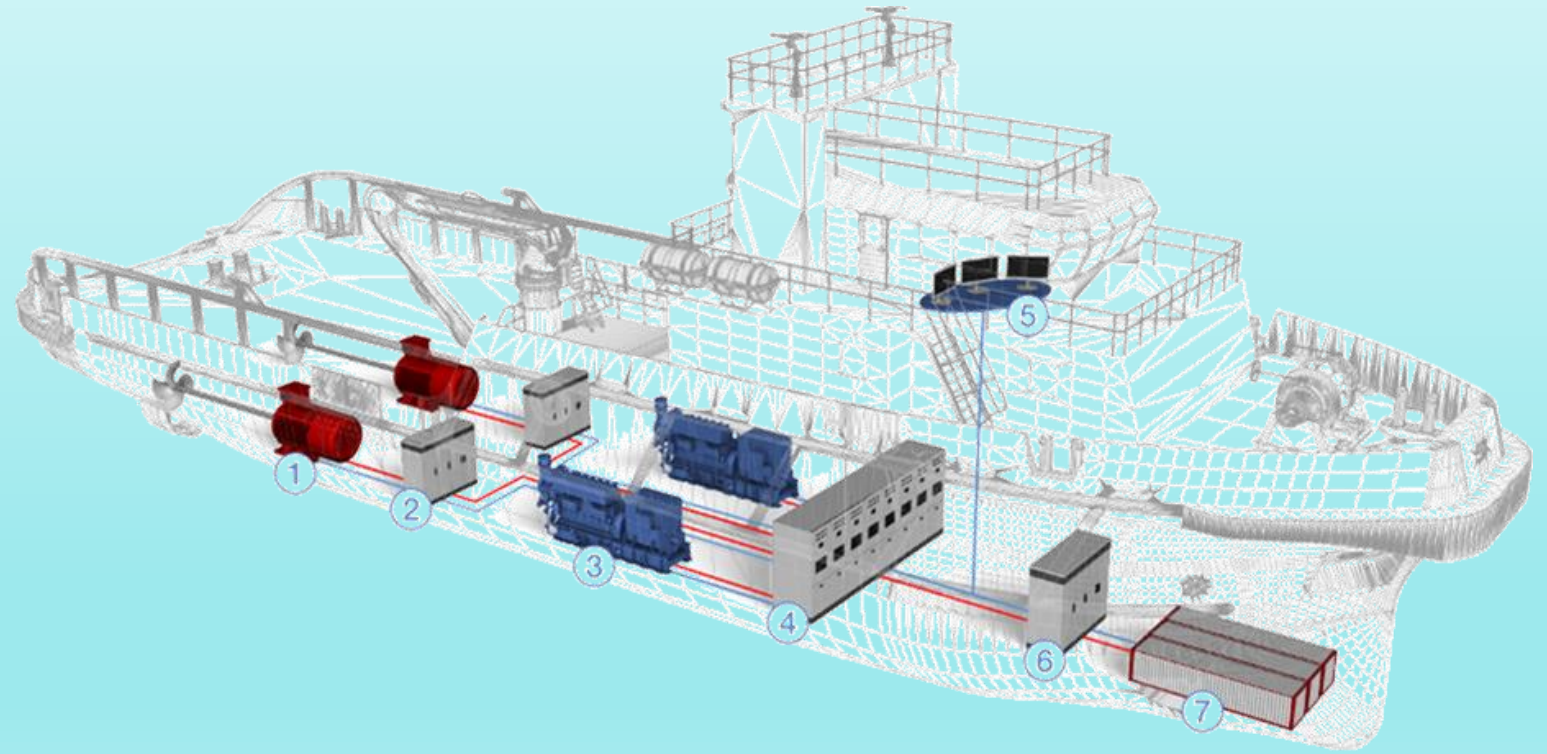
DATA AND CONTROL

With speed and quality, the management system provided by NCTECH, allows the user the comfort of monitoring and controlling their stations remotely. Your connection tools can be computers, cell phones and tablets.



SMART INDUSTRY

SATELLITE AND LTE COMMUNICATION

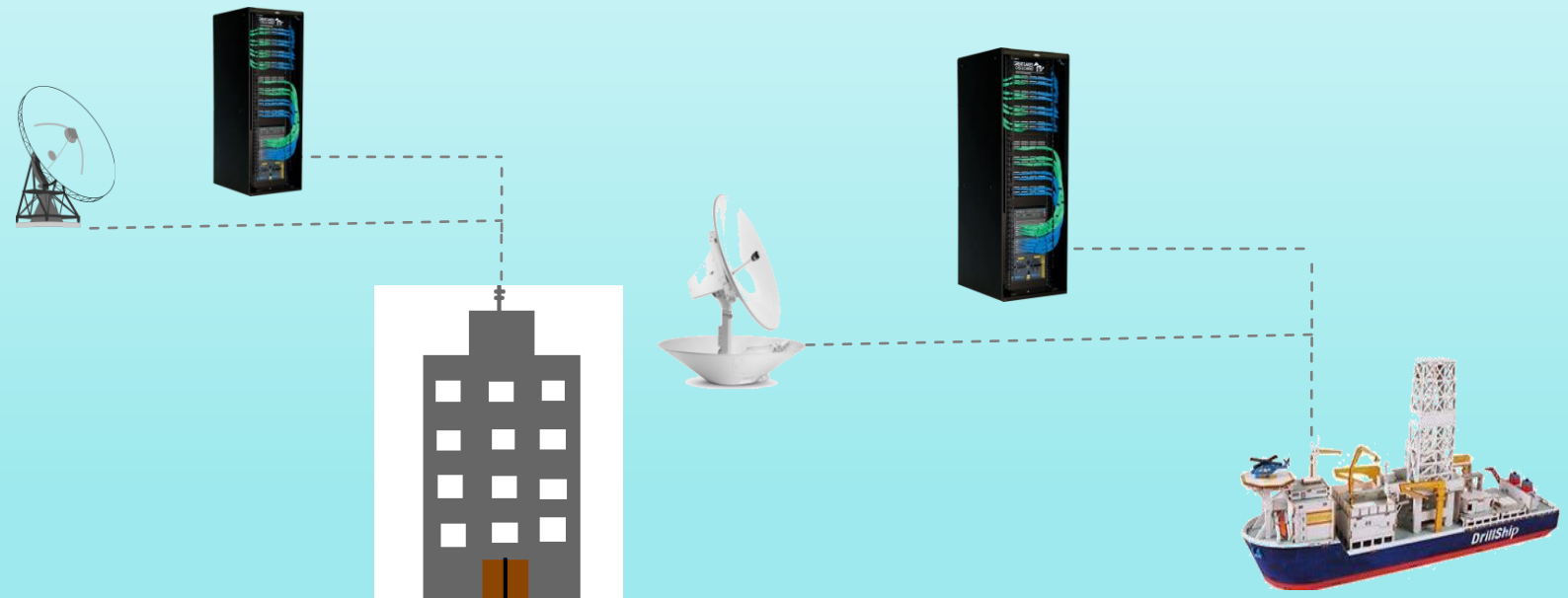


Infrastructure Management

NCTECH has experienced professionals in infrastructure management for maritime, terrestrial and data centers.

We offer proof of concept

Server management, Network management, Equipment such as: Switch, Firewall, Accelerator, Proxy; IT support to users; Monitoring of internal infrastructure; Drilling or navigation data transfer; Drilling monitoring; Complete Solution with Firewall, to guarantee the protection of your network; Infrastructure is redundant, and this includes: Links, Energy and equipment.



TELEPORT IMPROVEMENTS

Power BUC Adjustments

EUTELSAT 08 A



TELEPORT IMPROVEMENTS

Replace of LNB

EUTELSAT 08 A



TELEPORT MAINTENANCE

Check of Parameters after
components change's and
adjustments

EUTELSAT 08 A







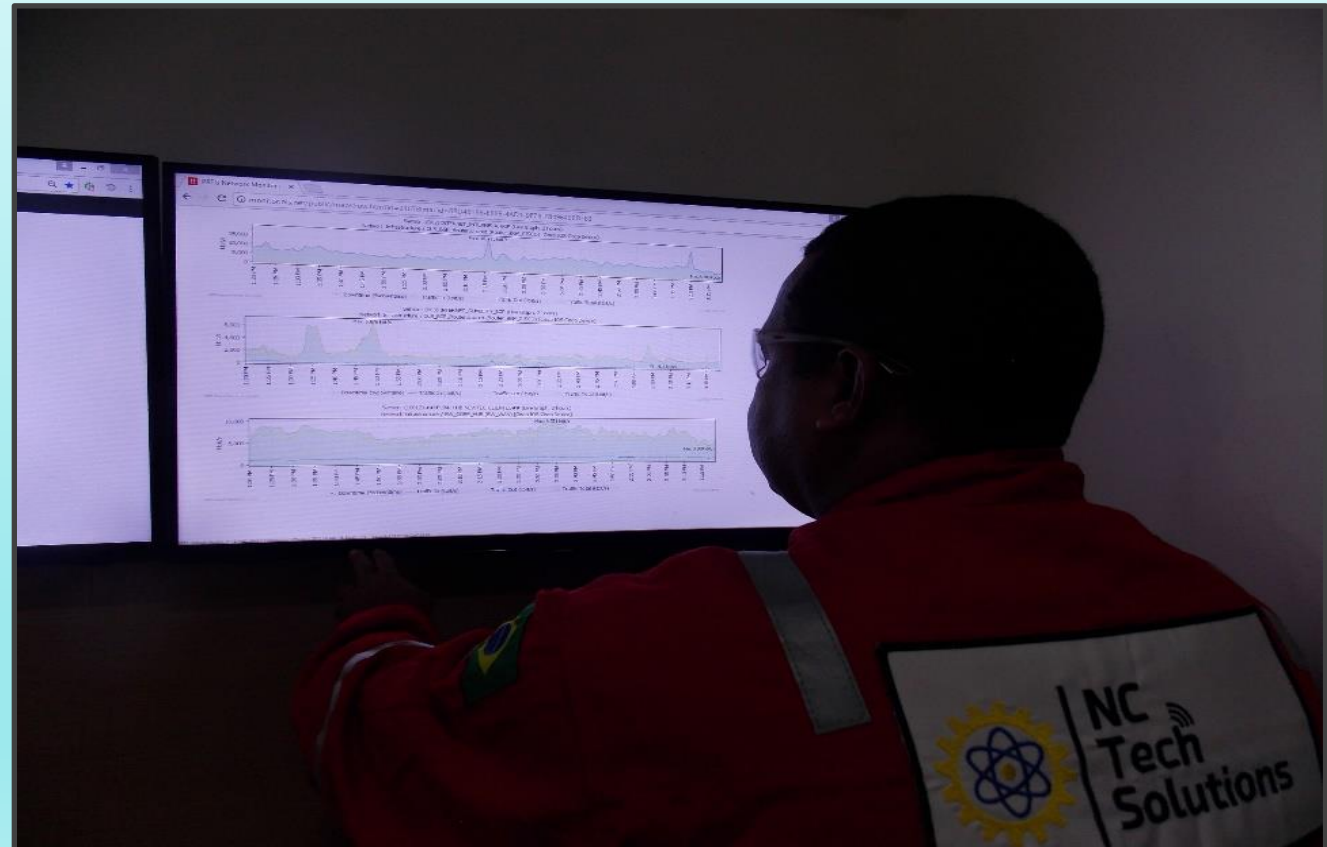
Proactive Monitoring

The monitoring system opens the AUTOMATICALLY ticket to the NOC “Network Operation Center”, after 10 minutes of communication failure (1st Level).

365/24/7

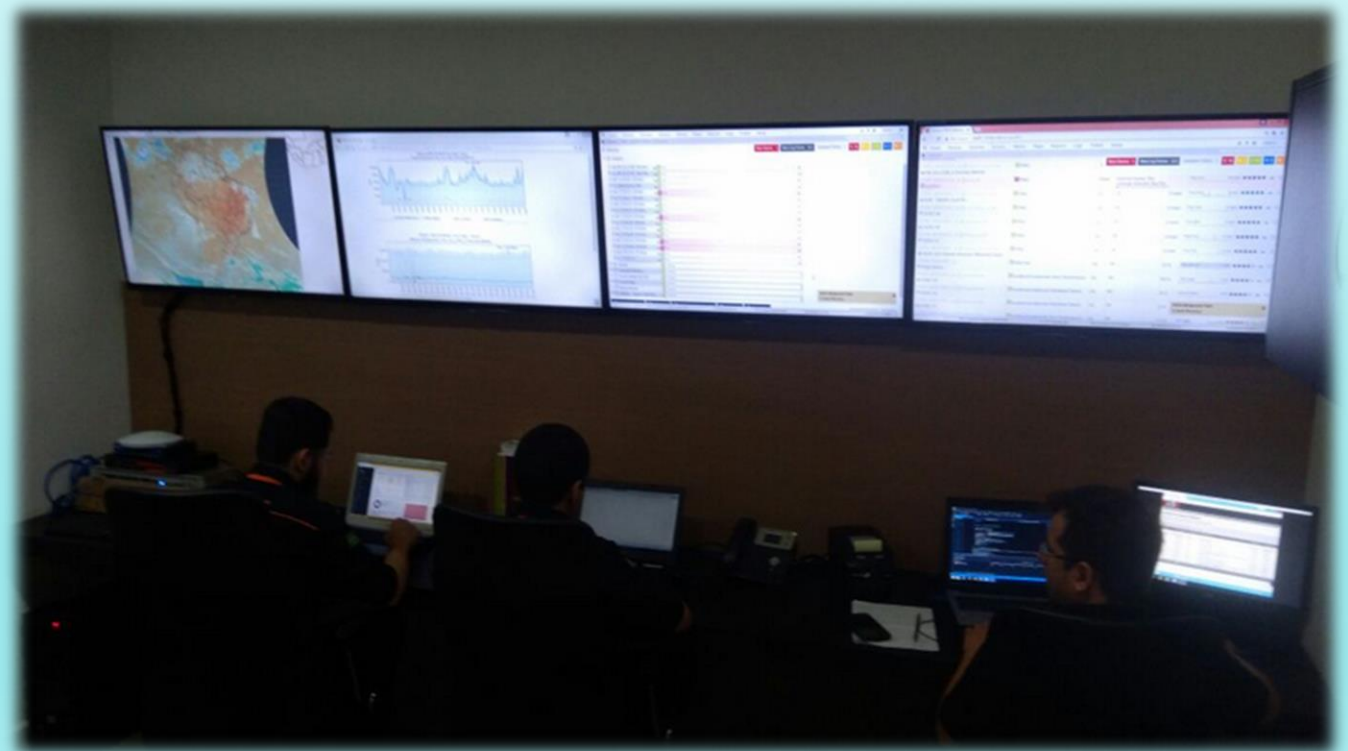
The system gathering from the monitor the informations required to analisys and is able to separate 04 diferente alarms:

 Normal  Instability  Degradation  Out of Services



Beside the automatic system, we have local operators that can act on the circuits and in case of problem, they call to onboard to check the alarm on a monitor.

NETWORK OPERATIONS CENTER



TELEPORT MAINTENANCE

Maintenance on a customer

COMTECH SETUP



CCTV & CFTV SYSTEMS



CCTV SYSTEM ON STORE

AUTONOMOUS SYSTEM

INDUSTRIAL INSTALLATION



CCTV SYSTEM ON STORE

ONSHORE SETUP

Commom Setup

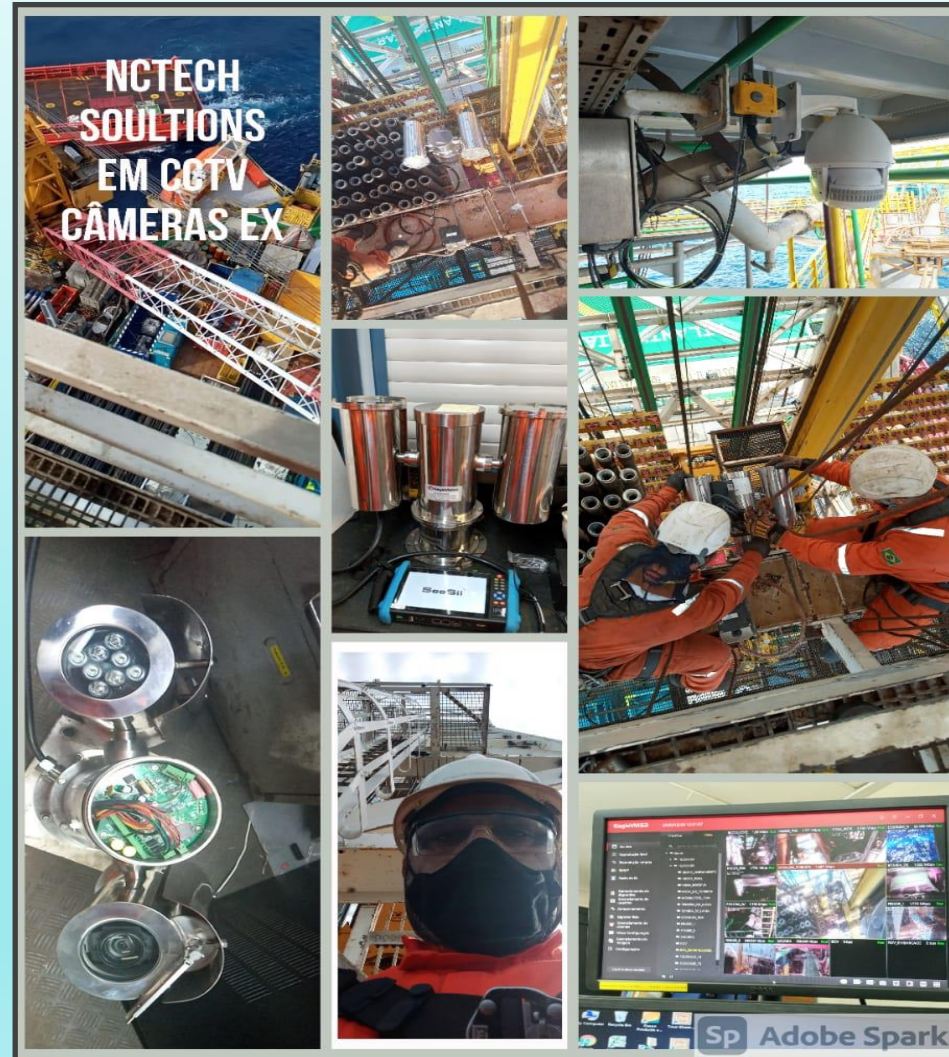


CCTV SYSTEM ON A RIG

OFFSHORE SETUP

Explosion-Proof System

Drilling Deck Cameras – Crowning Block

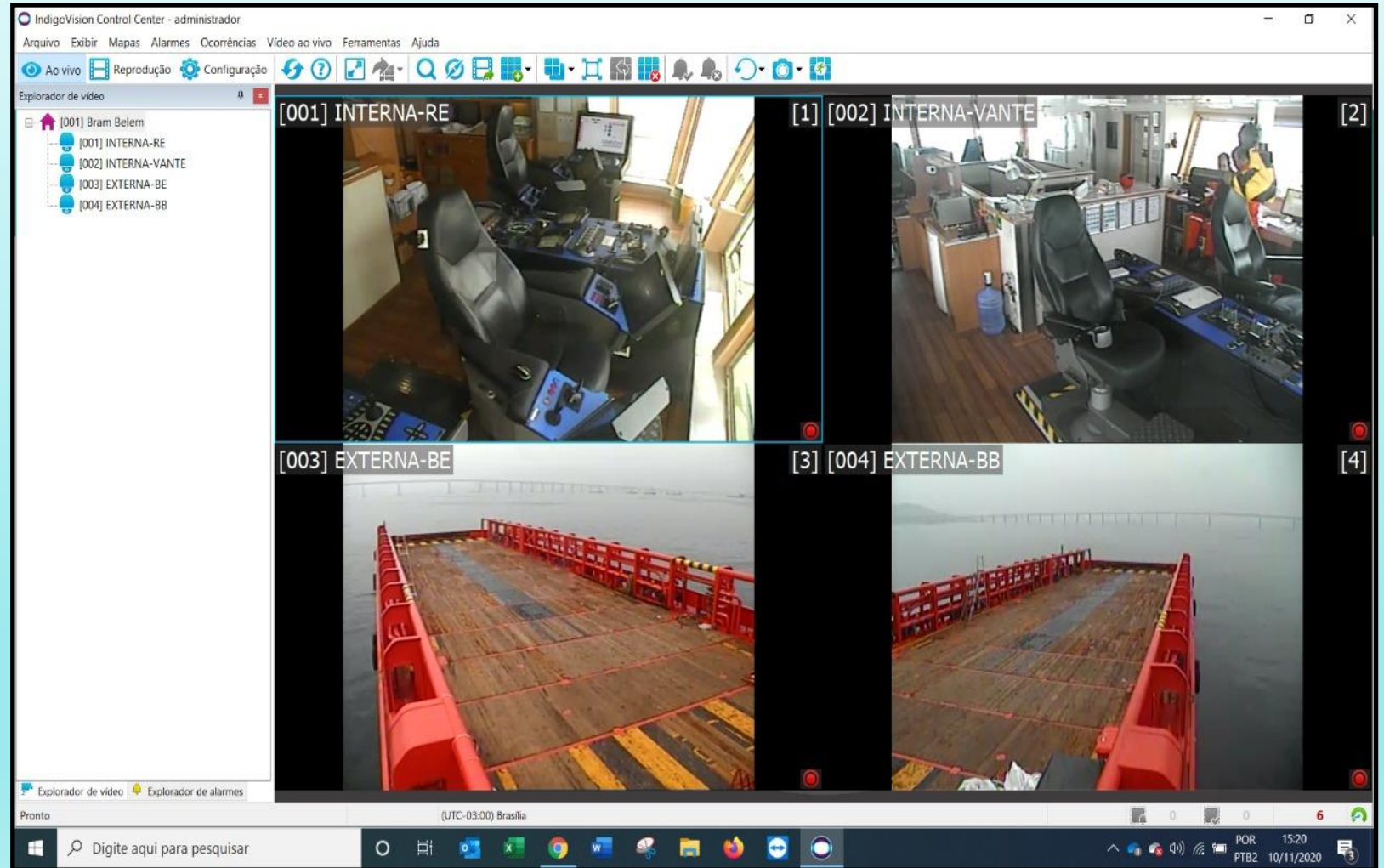


CCTV ON A SUPPLY BOAT

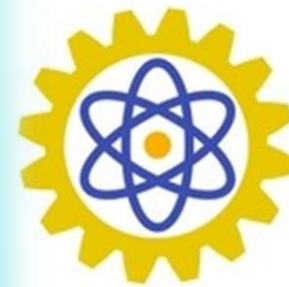
SHIPYARD

Explosion-Proof System

Remote Access Cameras Setup – Bridge and Load Deck



RADIO SYSTEMS

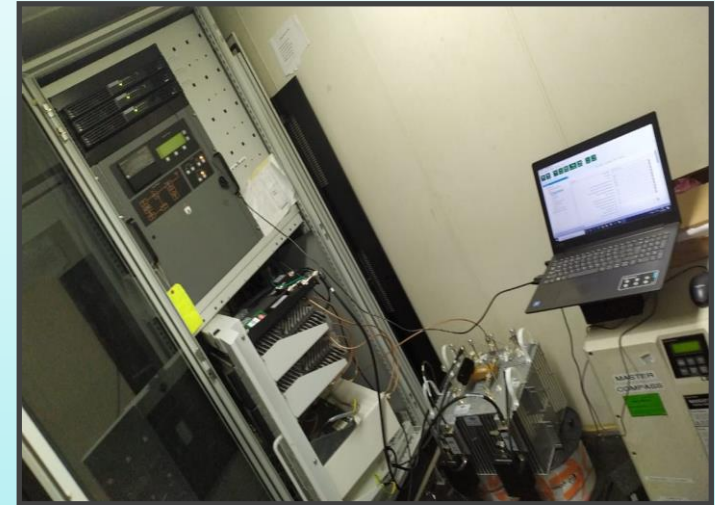


**NC
Tech
Solutions**

RADIO REPEATER

Active onboard on a Vessel to perform the troubleshooting on a UHF system Communication.

UHF SYSTEM

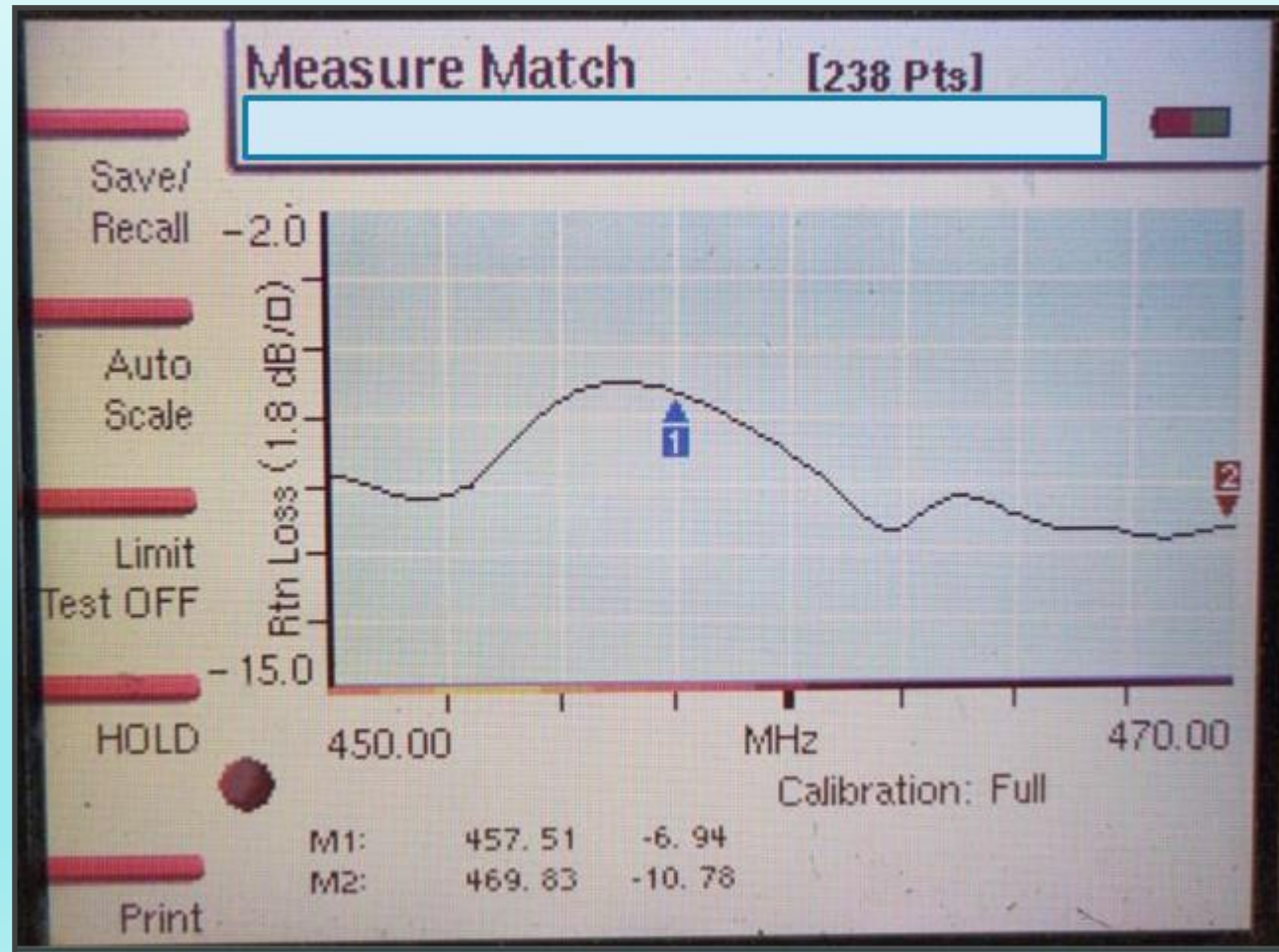


IONIZING REPORT

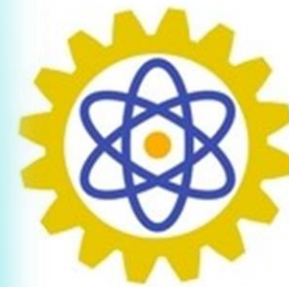
Reading and transmission security verifications

UHF SYSTEM

RADIOMETRIC REPORT



ENERGY



**NC
Tech
Solutions**

POWER SUPPLY

REDUNDANT GENERATORS

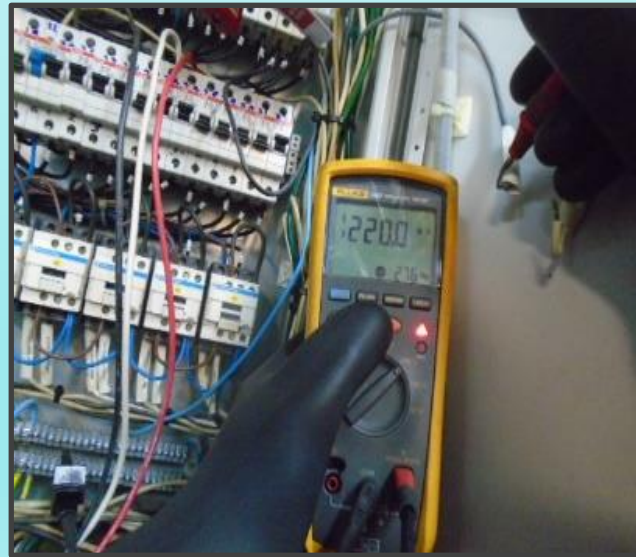
DIESEL AND BATTERY



POWER SUPPLY



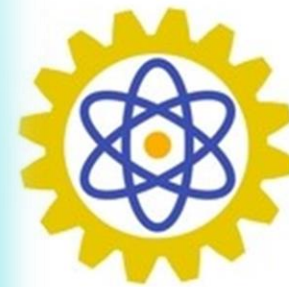
GENERAL MAINTENANCE



SHORT CIRCUIT



CABLING



**NC
Tech
Solutions**

RACK INSTALLATION

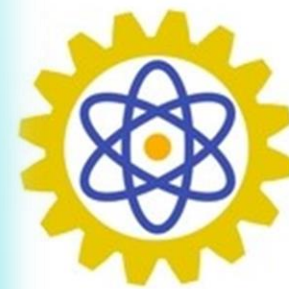
CABLING

CABLE RUNNING AND ORGANIZATION

Nctech professionals, are qualified to pull, connectorize and certify metallic and fiber optical cables.



PRODUCTS



**NC
Tech
Solutions**

ISAT PORTABLE PHONE Geostationary Satellites

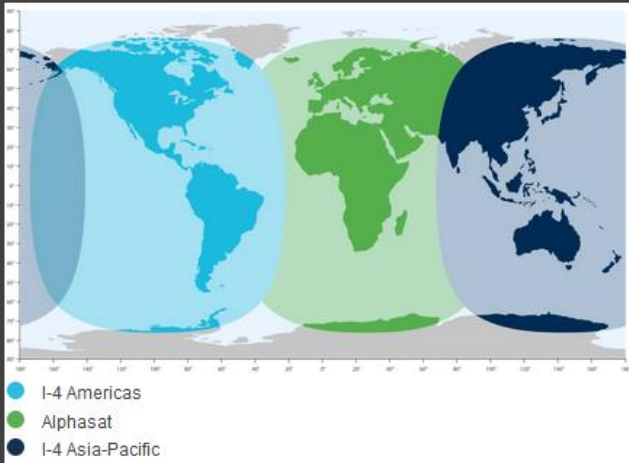


Network of satellites covering the entire globe, with the exception of the north and south poles

IsatPhone 2, was created for remote regions in which conventional cell phones do not operate, such as plantations, forests and ocean. The device is portable and robust, being able to be used in the most diverse environments and under extreme climatic conditions as long as it is aimed towards the sky.



SERVICES ON MOVEMENT



Network of satellites covering the entire globe, with the exception of the north and south poles.

Developed to cover remote regions such as plantations and roads, Explorer 325 is a BGAN satellite terminal that allows you to talk and access the Internet even in remote areas, making it ideal for use on the move with a vehicle.



BGAN M2M 9502 One Piece

The term BGAN (Broadband Global Area Network) is used by Inmarsat to designate services in the L band that provide the sending and receiving of voice and data with global coverage. Currently the BGAN line is the leader in mobile internet in the world. The BGAN service consists of three geostationary satellites that enable coverage of the entire terrestrial globe with the exception of the north and south poles.

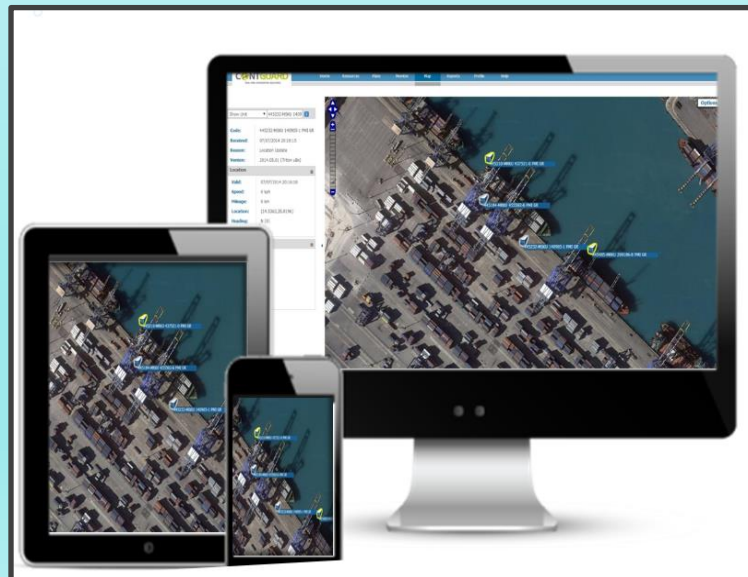
Introduced as an alternative to the 9202 terminal, the M2M One Piece integrates the 9502 modem with a compact antenna in a single device. The terminal has the same features as the M2M 9502, however it is a single piece, ideal for applications in locations susceptible to vandalism or weather.



NO MORE BLIND SPOTS

Full visibility on your products 24/7 during the trip from start to final destination.

REAL TIME MONITOR



Enterprise-grade Ku-band VSAT

The commercial-grade TracPhone V7-HTS uses a 60 cm-diameter antenna dish, in a 66 cm-diameter radome. The 3-axis gyro-stabilized maritime VSAT antenna with a 4th axis of automatic skew adjustment boasts an extended elevation range of -24° to 119° ensuring that the antenna tracks satellites directly above the vessel to low on the horizon. TracPhone V7-HTS also ensures you'll enjoy exceptional call quality, plus support for Wi-Fi calling via compatible cell phones¹.

TracPhone V7-HTS

The Blazing Fast, Reliable Communications Solution for the Finest Yachts
Offering the speed and reliability you expect for your onboard super yacht communications, TracPhone[®] V7-HTS delivers seamless global coverage with download/upload speeds as fast as 10 Mbps/3 Mbps. This advanced new solution allows you to enjoy fast data rates perfect for streaming HD content or video conferencing—allowing you to enjoy the Internet as you would on land.



TracVision TV6

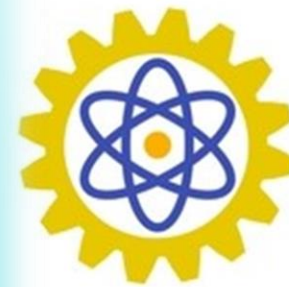
Enjoy Your Favorite Television Programming Everywhere You Cruise
TracVision® TV6 makes it easier than ever to enjoy your favorite television programming anywhere your seagoing adventures take you. This 60 cm (24-inch) marine satellite TV antenna provides access to satellite TV services worldwide and supports multiple receivers so everyone onboard can watch what they want.

Features Include

Reception of standard definition and HD Ku-band satellite TV programming from satellite TV services worldwide Ring Fire™ antenna technology for wider geographic coverage and better reception High-performance tracking with advanced algorithms for crystal-clear television picture in heavy seas



PROJECTS



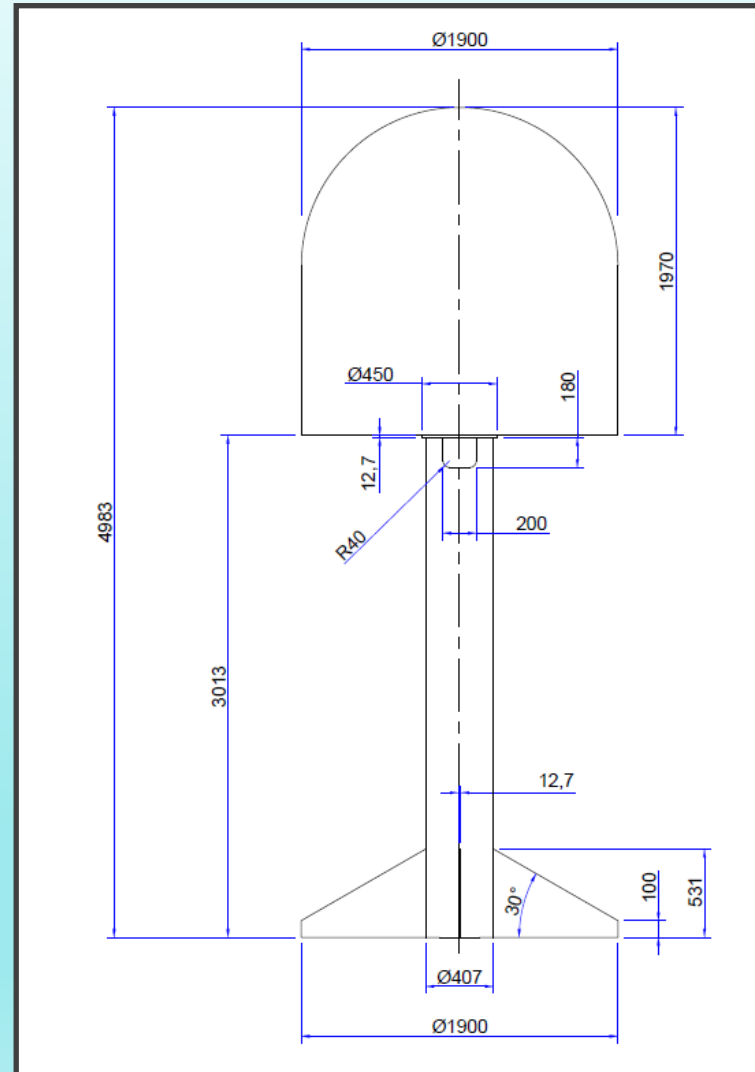
**NC
Tech
Solutions**

PEDESTAL FOR SAT ANTENNA



TV AND INTERNET AT SEA

FOR ANTENNA UNTIL 1.15 METERS

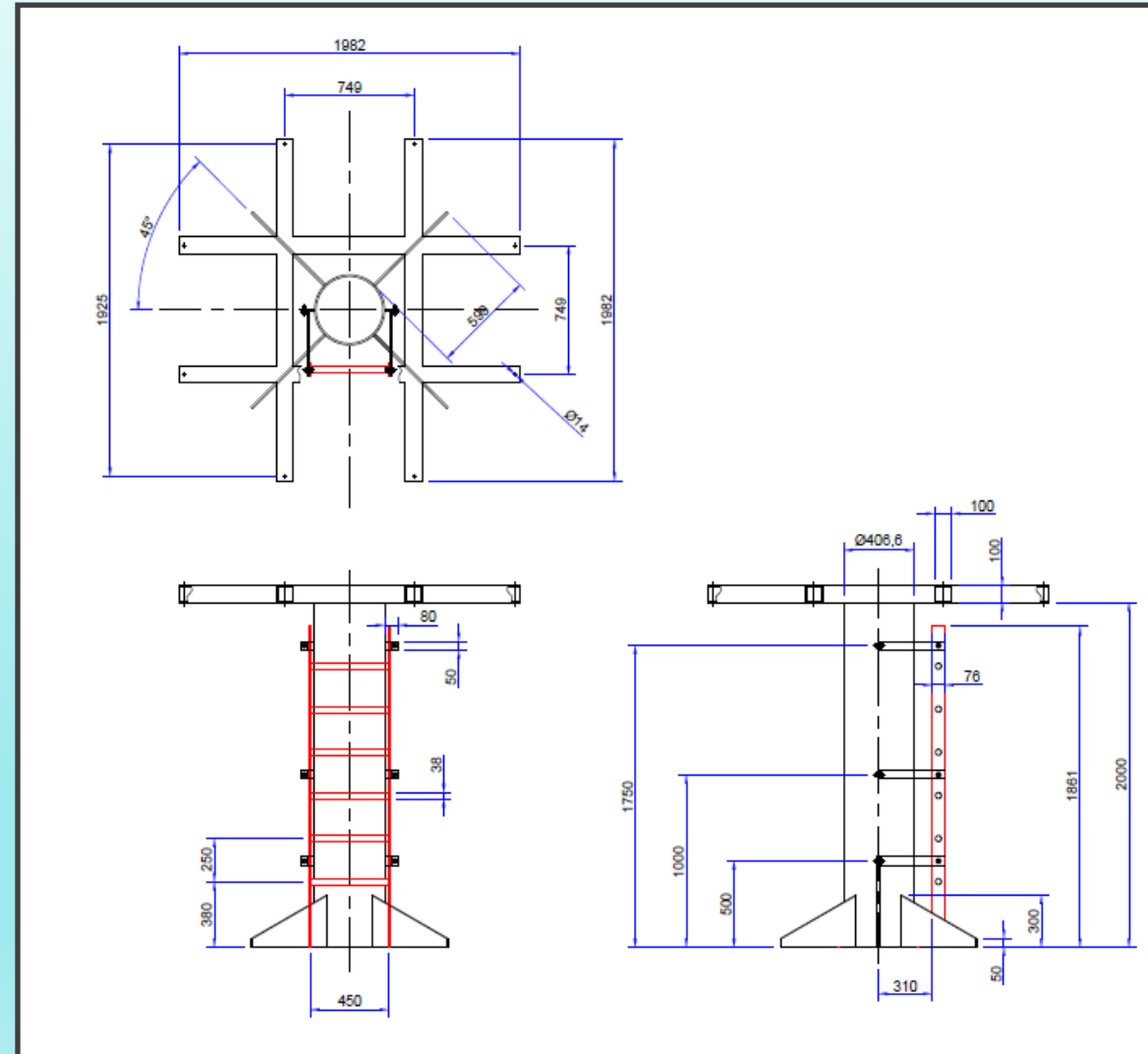


PEDESTAL FOR SAT ANTENNA



TV AND INTERNET AT SEA

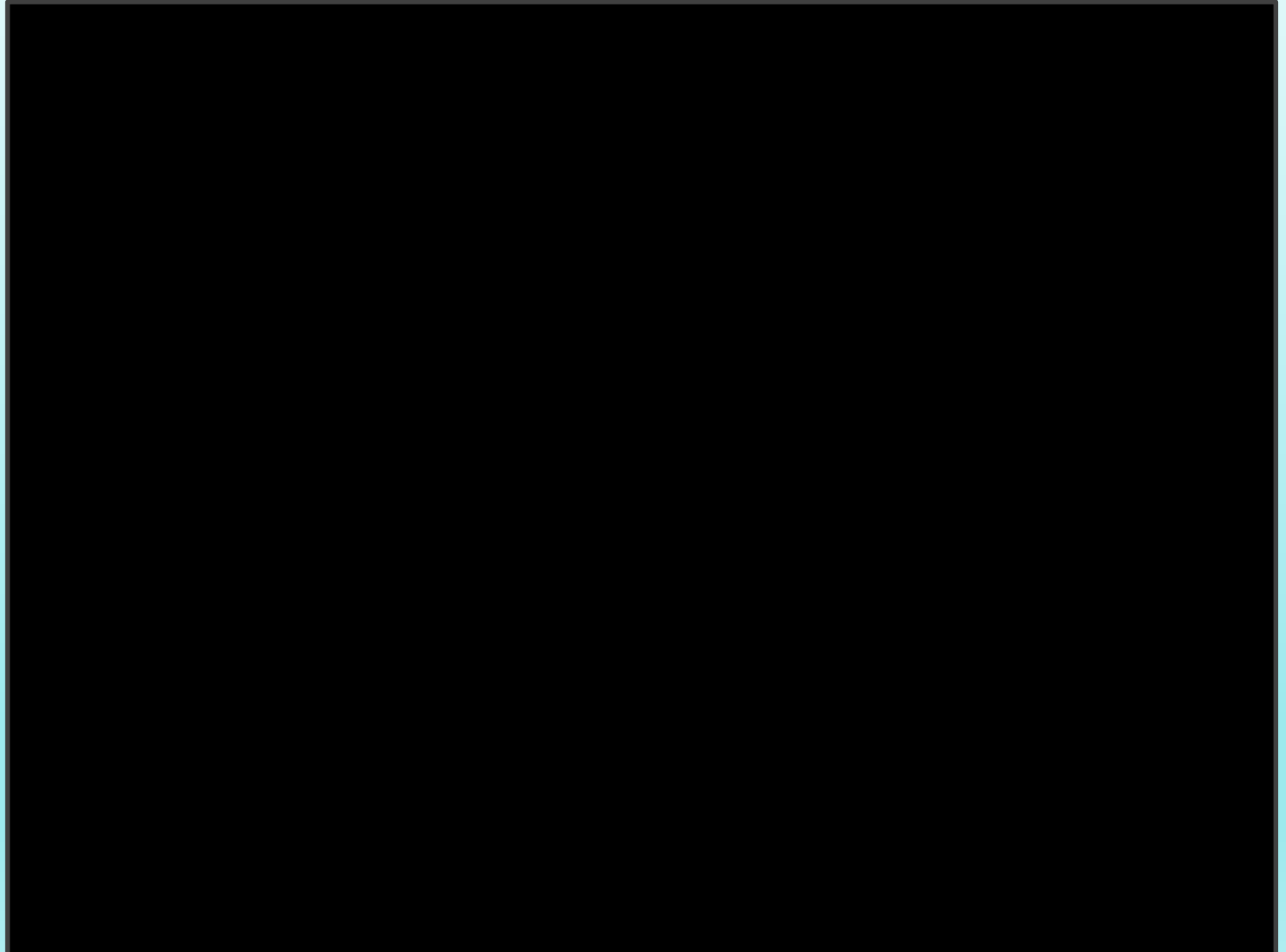
ANTENNAS WITH AIR CONDITIONER UNTIL 2.4 METERS



PATENT



VIDEO



MISSION

Meet with excellence the demands of our customers from the development of the offer, with products and services that contribute to improving the quality of life of people and companies, generating well-being, comfort and satisfaction in a sustainable manner.

VISION

To be a reference company, recognized as the best option by customers, employees, community, suppliers and investors, due to the quality of our products, services and personal and professional relationship.

COMPANY VALUES

Respect for People, Honesty, Professional Recognition, Receptibility



IN DIRECT DEALER



PARTNERS



MAIN CUSTOMERS



Acknowledgment



“A machine can do the job of 50 ordinary men. No machine can do the job of an extraordinary man ”.

Elbert Hubbard.

CALL US

André Norte
Project Manager



Rua Teixeira de Gouveia, 1006 Macaé – RJ – Brasil.
Administrative Office: +55(22) 2772-2078
Mobile Phone: +55(22) 98163-3329 / 99970-6801
Direct Email: andre.norte@nctechsolutions.com.br
Office Email: ncstbrz@outlook.com
Site: www.nctechsolutions.com.br



Cleber Coutinho
Service manager



Rua Teixeira de Gouveia, 1006 Macaé – RJ – Brasil.
Administrative Office: +55(22) 2772-2078
Mobile Phone: +55(21) 97015-2015
Direct Email: cleber.coutinho@nctechsolutions.com.br
Office Email: ncstbrz@outlook.com
Site: www.nctechsolutions.com.br



QUESTIONS

